



**GP series**

**GP 121000 12V 100AH**

**Valve Regulated Lead Acid Battery**

Maintenance-Free Sealed Lead Acid Battery.

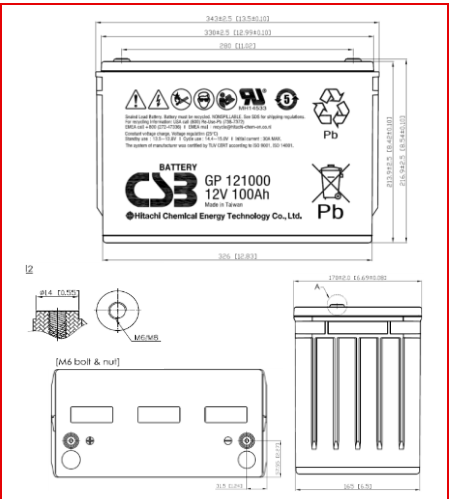
Absorbent Glass Mat (AGM) technology for efficient gas recombination of up to 99%.

**Design for Standby Power Applications**

<p><b>【Design Life】</b> Up to 5 Years in Standby Service at 25°C Eurobat (20°C) : 3-5 years, Standard Commercial</p> <p><b>【Operating Temperature Range】</b> Nominal Operating Temperature : 25°C (77°F) Discharge : -15°C ~ 50°C (5°F~122°F) Charge: -15°C ~ 40°C (5°F~104°F) Storage: -15°C ~ 40°C (5°F~104°F)</p>	<p><b>【Float Charging Voltage】</b> 13.5 ~ 13.8 VDC/Unit at 25°C (77°F)</p> <p><b>【Equalization Charging Voltage】</b> 14.4 ~ 15.0 VDC/Unit at 25°C (77°F)</p> <p><b>【Self Discharge】</b> Less than 10% after 90 days, can be stored up to 6 months at 25°C (77°F); Fully recharging is required before usage, and charged sooner if stored at higher temperature than 25°C (77°F).</p>
--	---

**Specification** Design according with IEC 60896-21/22: 2004

Nominal Voltage	12V (6 cells per unit)	
Nominal Capacity	100 Ah @20hr-rate to 1.75V per cell @25°C (77°F)	
Weight	Approx. 30.60 Kg (67.44 lbs)	
Maximum Discharge Current	800A (5sec)	
Internal Resistance	Approx. 4.4mΩ	
Short Circuit Current	2323A	
Maximum Charge Current	30.00A	
Terminal types	I2 thread lead alloy terminal to accept M6 bolt	
Terminal hardware Torque	138.6 Kgf-cm / 120.3 Lbf-in / 13.58 N-m	
Container Material	PP (UL 94-HB) & Flame Retardant (94-V0) available upon request	
Dimensions	Length (L)	343.0±2.5 mm / 13.50±0.10 inch
	Width (W)	170.0±2.0 mm / 6.69±0.08 inch
	Container Height (h)	213.9±2.5 mm / 8.42±0.10 inch
	Overall Height (H)	216.9±2.5 mm / 8.54±0.10 inch



Constant Current Discharge Characteristics Unit: A (25°C, 77°F)												
F.V/Time	5 MIN	10MIN	15MIN	30MIN	60MIN	90MIN	2HR	3HR	5HR	8HR	10HR	20HR
1.60V	372	257	197	121	70.1	50.4	39.9	29.0	18.6	12.3	10.1	5.26
1.67V	326	242	187	117	68.8	49.5	39.2	28.6	18.3	12.1	9.94	5.23
1.70V	315	234	183	116	68.1	49.1	38.9	28.4	18.2	12.0	9.86	5.20
1.75V	286	213	175	113	66.8	48.3	38.4	27.9	17.9	11.8	9.72	5.10
1.80V	241	192	157	105	65.4	47.3	37.6	27.3	17.5	11.5	9.59	5.00
1.85V	202	165	135	96.8	62.5	46.0	36.6	26.5	17.1	11.2	9.24	4.80

Constant Power Discharge Characteristics Unit: W (25°C, 77°F)												
F.V/Time	5MIN	10MIN	15MIN	30MIN	60MIN	90MIN	2HR	3HR	5HR	8HR	10HR	20HR
1.60V	3593	2696	2223	1366	802	579	459	335	216	143	117	61.1
1.67V	3463	2557	2094	1325	785	569	453	328	213	141	115	60.5
1.70V	3307	2505	2036	1306	778	564	449	325	211	140	114	60.0
1.75V	2954	2359	1931	1267	763	553	441	320	208	138	113	59.5
1.80V	2675	2222	1815	1218	746	542	432	313	203	135	111	58.9
1.85V	2451	1958	1610	1165	725	528	422	306	198	132	109	56.6

Please refer to the official site for the latest rating confirmation. URL: [www.csb-battery.com](http://www.csb-battery.com)

Issued: 161121

**Sales Offices**

**日立化成能源科技股份有限公司**  
Hitachi Chemical Energy Technology Co., Ltd.

**BUSINESS HEADQUARTERS**

Tel: +86-2-2880-5600  
Fax: +866-2-2888-3300

**USA OFFICE**

Tel: +1-817-244-7777 / 1-(800)3-CSB-USA (272872)  
Fax: +1-817-244-4445

**SHENZHEN OFFICE (CHINA)**

Tel: +86-755-8831-6488, 8831-6775  
Fax: +86-755-8831-6075

**EUROPE (EMEA) OFFICE**

Tel: +31(0)180-418-140  
Fax: +31(0)180-418-327

**SHANGHAI OFFICE (CHINA)**

Tel: +86-21-5046-1622, 5046-0833  
Fax: +86-21-5046-1046

**TAIPEI OFFICE**

Tel: +886-2-2880-5600  
Fax: +866-2-2888-3300

**BEIJING OFFICE (CHINA)**

Tel: +86-10-5820-5336, 5820-5338  
Fax: +86-10-5820-3053

Recognized under UL 1989, and certified by ISO 9001, 14001.

