



HRL series

HRL 1210W 12V 10W

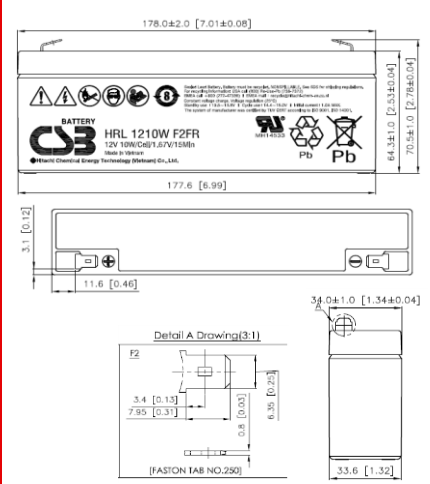
Valve Regulated Lead Acid Battery

Maintenance-Free Sealed Lead Acid Battery.
Absorbent Glass Mat (AGM) technology for efficient gas recombination of up to 99%.

Design for Standby Power Applications

<p>【Design Life】 Up to 8 Years in Standby Service at 25°C Eurobat (20°C) : 6-9 years, General Purpose</p> <p>【Operating Temperature Range】 Nominal Operating Temperature : 25°C (77°F) Discharge : -15°C ~ 50°C (5°F~122°F) Charge: -15°C ~ 40°C (5°F~104°F) Storage: -15°C ~ 40°C (5°F~104°F)</p>	<p>【Float Charging Voltage】 13.5 ~ 13.8 VDC/Unit at 25°C (77°F)</p> <p>【Equalization Charging Voltage】 14.4 ~ 15.0 VDC/Unit at 25°C (77°F)</p> <p>【Self Discharge】 Less than 10% after 90 days, can be stored up to 6 months at 25°C (77°F); Fully recharging is required before usage, and charged sooner if stored at higher temperature than 25°C (77°F).</p>
--	---

Specification	Design according with IEC 61056-1/2:2012	
Nominal Voltage	12V (6 cells per unit)	
Nominal Capacity	10W @15min-rate to 1.67V per cell @25°C (77°F)	
Weight	Approx. 1.10 Kg (2.42 lbs)	
Maximum Discharge Current	40A (5sec)	
Internal Resistance	Approx. 32.10 mΩ	
Short Circuit Current	120A	
Maximum Charge Current	1.0A	
Terminal types	F2 terminal -Faston Tab 250	
Terminal hardware Torque	--	
Container Material	ABS (UL 94-HB) & Flame Retardant (94-V0) available upon request	
Dimensions	Length (L)	178.0±2.0 mm 7.01±0.08 inch
	Width (W)	34.0±1.0 mm 1.34±0.04 inch
	Container Height (h)	64.3±1.0 mm 2.53±0.04 inch
	Overall Height (H)	70.5±1.0 mm 2.78±0.04 inch



Constant Current Discharge Characteristics Unit: A (25°C, 77°F)													
F.V/Time	2MIN	4MIN	5MIN	6MIN	8MIN	10MIN	15MIN	20MIN	30MIN	45MIN	60MIN	90MIN	
1.60V	19.2	13.7	11.8	10.5	8.84	7.47	5.51	4.24	3.06	2.14	1.66	1.29	
1.67V	18.3	13.3	11.5	10.2	8.70	7.37	5.43	4.20	3.03	2.12	1.64	1.28	
1.70V	17.9	13.0	11.3	10.1	8.64	7.32	5.39	4.18	3.02	2.11	1.63	1.27	
1.75V	17.1	12.5	11.0	9.85	8.37	7.15	5.27	4.10	2.98	2.09	1.62	1.26	
1.80V	16.3	11.8	10.5	9.50	8.10	6.98	5.14	4.02	2.93	2.06	1.60	1.25	
1.85V	15.6	11.1	10.0	9.15	7.83	6.81	5.02	3.94	2.89	2.04	1.59	1.24	

Constant Power Discharge Characteristics Unit: W (25°C, 77°F)													
F.V/Time	2MIN	4MIN	5MIN	6MIN	8MIN	10MIN	15MIN	20MIN	30MIN	45MIN	60MIN	90MIN	
1.60V	200	147	127	113	95.6	81.5	60.9	47.0	34.1	24.0	18.7	14.7	
1.67V	193	143	124	110	94.0	80.5	60.0	46.5	34.0	23.9	18.6	14.6	
1.70V	189	140	121	108	92.9	79.8	59.3	46.3	33.9	23.8	18.5	14.5	
1.75V	182	134	118	106	91.0	78.9	58.5	46.0	33.5	23.6	18.4	14.4	
1.80V	175	128	114	103	89.1	77.3	57.2	45.2	33.0	23.3	18.2	14.3	
1.85V	169	121	109	100	86.6	75.8	55.8	44.5	32.6	23.1	18.1	14.2	

Please refer to the official site for the latest rating confirmation. URL: www.csb-battery.com Issued: 161101

Sales Offices
日立化成能源科技股份有限公司
 Hitachi Chemical Energy Technology Co., Ltd.

Recognized under UL 1989,
and certified by ISO 9001, 14001.

BUSINESS HEADQUARTERS
 Tel: +886-2-2880-5600
 Fax: +866-2-2888-3300

USA OFFICE
 Tel: +1-817-244-7777 / 1-(800)3-CSB-USA (272872)
 Fax: +1-817-244-4445

SHENZHEN OFFICE (CHINA)
 Tel: +86-755-8831-6488, 8831-6775
 Fax: +86-755-8831-6075

EUROPE (EMEA) OFFICE
 Tel: +31(0)180-418-140
 Fax: +31(0)180-418-327

SHANGHAI OFFICE (CHINA)
 Tel: +86-21-5046-1622, 5046-0833
 Fax: +86-21-5046-1046

TAIPEI OFFICE
 Tel: +886-2-2880-5600
 Fax: +866-2-2888-3300

BEIJING OFFICE (CHINA)
 Tel: +86-10-5820-5336, 5820-5338
 Fax: +86-10-5820-3053